

The National Survey of Households Living Conditions 2004 and 2007

Selected characteristics of the elderly population in Lebanon (2004 and 2007)

The “Capacity Building for Poverty Reduction” project is periodically publishing a series of statistical fact sheets. These fact sheets are based on the data of the National Survey of Households Living Conditions 2004 (Ministry of Social Affairs, Central Administration for Statistics, and the United Nations Development Programme). Where indicated, data from the National Survey of Households Living Conditions for 2007 (Central Administration for Statistics, Ministry of Social Affairs, International Labor Organization and United Nations Development Programme) was presented. Those statistical fact sheets aim at introducing the reader to the different indicators and topics covered by the survey, such as: characteristics of residents and households per governorate, characteristics of certain population sub-groups (female househead, illiterates, women, children, etc...).

We look forward to receiving your feedback and suggestions for future topics.

General Profile

	2004	2007
Total Elderly (% of population)	282251 (7.5)	362441 (9.6)
Males (% of elderly)	142372 (50.6)	182456 (50.4)
Females (% of elderly)	139252 (49.4)	179984 (49.6)

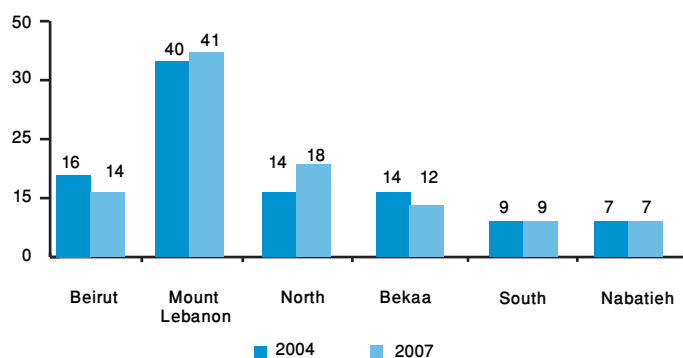
Distribution of elderly by age and sex (%)

Age	2004			2007		
	Males	Females	Total	Males	Females	Total
65-69	39.9	40.1	40.0	32.8	34.5	33.7
70-74	30.4	28.9	29.7	29.2	28.9	29.0
75-79	17.2	17.8	17.5	21.0	18.3	19.7
80-84	9.4	9.6	9.5	11.6	13.6	12.5
85+	3.0	3.6	3.3	5.4	4.7	5.1
Total	100.0	100.0	100.0	100.0	100.0	100.0

Distribution of elderly by governorate and sex (%)

Governorate	2004			2007		
	Males	Females	Total	Males	Females	Total
Beirut	14.4	17.2	15.8	12.8	14.2	13.5
Mount Lebanon	39.6	39.8	39.7	39.5	42.3	40.9
North	14.7	13.5	14.1	18.7	16.9	17.8
Bekaa	15.6	12.9	14.3	12.6	11.7	12.1
South	9.2	9.7	9.5	8.8	8.4	8.6
Nabatieh	6.6	6.7	6.7	7.7	6.5	7.1
Total	100.0	100.0	100.0	100.0	100.0	100.0

Distribution of elderly by governorate (%)



Elderly population within each governorate (%)

	2004			2007		
	Males	Females	Total	Males	Females	Total
Beirut	11.4	11.4	11.4	13.5	12.9	13.2
Mount Lebanon	7.4	7.5	7.5	9.8	10.1	9.9
North	5.5	4.9	5.2	8.6	8.2	8.4
Bekaa	9.3	7.8	8.5	9.2	8.7	9.0
South	6.7	6.6	6.7	7.8	7.2	7.5
Nabatieh	8.6	8.4	8.5	11.3	9.4	10.3
Lebanon	7.6	7.4	7.5	9.7	9.5	9.6

Distribution of type of dwelling belonging to elderly by sex 2004 (%)

Type of dwelling	Males	Females	Total
Independent house	35.5	31.4	33.5
Villa	0.9	0.5	0.7
Apartment in an independent bldg	59.3	65.2	62.2
Apartment in a residential project	4.3	2.8	3.6
Improvised dwelling	0.1	0.0	0.1
Total	100.0	100.0	100.0

Distribution of elderly by marital status and sex (%)¹

Marital status	2004			2007		
	Males	Females	Total	Males	Females	Total
Never married	2.8	6.4	4.6	1.9	5.4	3.7
Married	86.5	41.9	64.4	86.8	47.2	67.1
Widowed	9.8	50.6	30.0	10.0	46.6	28.2
Divorced	0.6	0.9	0.7	0.6	0.5	0.5
Separated	0.2	0.2	0.2	0.7	0.3	0.5
Total	100.0	100.0	100.0	100.0	100.0	100.0

Elderly having other nationalities 2.5%
 Males elderly having other nationalities 2.6%
 Females elderly having other nationalities 2.5%

¹ Percentage of males elderly married is much higher than that of females' elderly since wives are usually younger in age than men in Lebanon, and hence, the wives of some of the elderly males might not be elderly.

Education and Labor Force

	2004	2007
Illiteracy rate among elderly	41.4%	41.4%
Illiteracy rate among males elderly	27.9%	27.0%
Illiteracy rate among females elderly	55.3%	56.0%

Distribution of elderly by educational level and sex (%)

Educational level attained	2004			2007		
	Males	Females	Total	Males	Females	Total
Illiterate	27.9	55.3	41.4	27.0	56.0	41.4
Can read and write	24.3	13.2	18.8	24.8	16.1	20.5
KG	0.5	0.4	0.5	1.5	0.6	1.0
Elementary	25.4	18.2	21.9	24.2	14.7	19.5
Intermediary	9.1	6.6	7.9	8.1	6.6	7.4
Secondary	5.3	4.5	4.9	6.2	4.4	5.3
University level	6.4	1.5	4.0	6.6	1.4	4.1
Others ²	1.1	0.3	0.7	1.6	0.1	0.9
Total	100.0	100.0	100.0	100.0	100.0	100.0

Distribution of elderly by the primary status and sex (%)

Primary individual status	2004			2007		
	Males	Females	Total	Males	Females	Total
Working ³	28.7	2.5	15.7	26.3	1.6	14.1
Unemployed	4.5	0.2	2.3	4.2	0.0	2.1
Retired	17.7	1.6	9.7	17.6	2.0	9.9
Economically Inactive	14.1	78.9	46.2	15.1	70.3	42.5
Unable to work	35.0	16.8	26.0	36.7	26.1	31.5
Total	100.0	100.0	100.0	100.0	100.0	100.0

2. "Others" includes : BP, BT, TS and LT degrees

3. "Working" includes clergyman.

Health

Medical insurance of elderly by sex (%)

	2004			2007		
	Males	Females	Total	Males	Females	Total
Benefiting from medical insurance	50.4	48.8	49.6	46.4	43.8	45.1
As member	52.8	17.5	35.6			
As beneficiary	47.2	82.5	64.4			

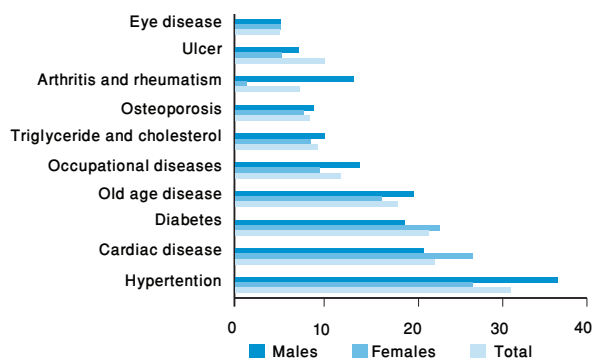
Coverage by the insurance 2004 (%)

	Males	Females	Total
Hospitalization	99.8	99.9	99.8
Medication	92.9	92.6	92.8
Medical Examination	93.7	93.3	93.5
X-rays and lab analysis	97.5	96.0	96.8
Job hazards	7.7	1.2	4.5
Other services	0.2	0.5	0.3

Number of chronic diseases of elderly by sex 2004 (%)

	Males	Females	Total
Elderly with no chronic disease	35.4	23.9	29.7
One chronic disease	30.3	30.1	30.2
Two chronic diseases	18.6	24.2	21.4
Three chronic diseases	11.4	13.3	12.3
Four chronic diseases	3.3	5.9	4.6
Five chronic diseases	1.1	2.5	1.8
Total	100.0	100.0	100.0

Prevalence of the ten chronic diseases among elderly people by sex 2004 (%)⁴



4.8% of Elderly Males reported "prostate" as a chronic disease.

4. "old age diseases" refers to diseases such as Alzheimer, Parkinson, etc..

Elderly with special needs (disability) 7.2 %

Kind of disability 2004 (%)

Movement disability	74.0
Speech and hearing disability	19.6
Visual disability	20.5
Mental disability	5.0

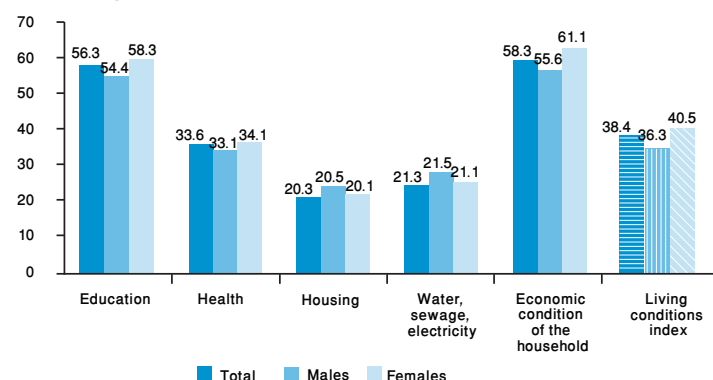
Causes of disability 2004 (%)

Congenital	2.5
Birth related	0.9
Epidemic	3.7
Other type of diseases	16.4
Old age	54.9
Accident	14.8
War	3.1
Other	3.6

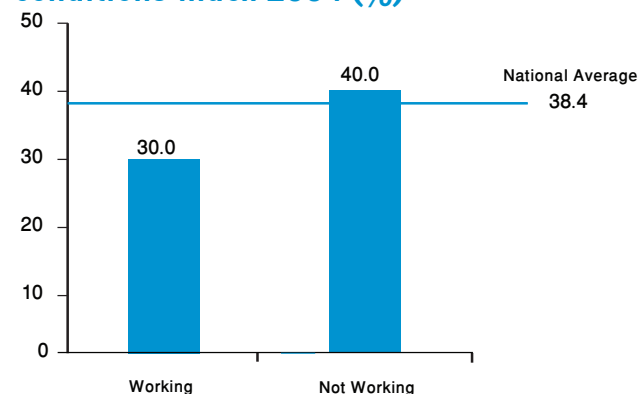
Elderly holders of disability card issued by MoSA⁵ 12,640

Living Conditions

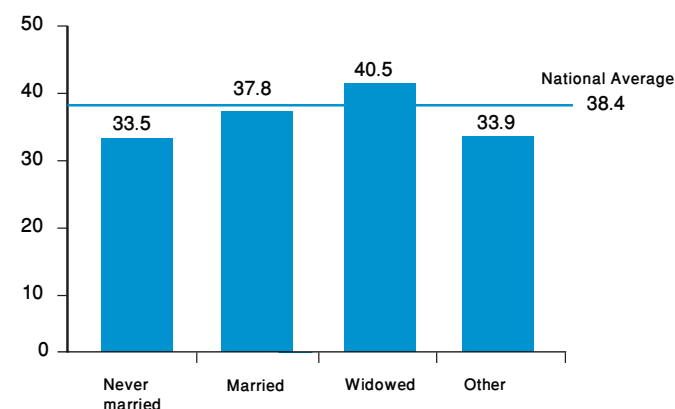
Percentage of deprived elderly according to the living conditions index and its fields by sex 2004 (%)



Percentage of deprived elderly by primary status (work related) in comparison to total deprived elderly according to the living conditions index 2004 (%)



Percentage of deprived elderly by marital status in comparison to total deprived elderly according to the living conditions index 2004 (%)⁶



5. Source: Ministry of Social Affairs – Rights and Access Program, June 2008

6. "Others" includes divorced and separated.